

TITANIUM PBO

FEATURES INCLUDE:

- ◀ Small footprint - low profile
- ◀ Quiet, energy efficient hot air recycling system
- ◀ Four independently controlled baking zones for optimum plate baking
- ◀ Fully enclosed baking chamber with extraction ensures minimum fume escape and heat loss
- ◀ Uniform airflow and temperature distribution through multiple air knives and independent circulation blowers
- ◀ Simple, fully automatic operation
- ◀ Up to five programmable presets (temperature and speed) for different plate types
- ◀ Sleep function allows oven to automatically turn on at a pre-set time each morning

The TITANIUM 1250 and 1650 Post Bake Ovens complement the HEIGHTS TITANIUM range of plateline equipment, including processors, conveyors and rinse gum units, and are suitable for all analogue, UV (CTcP), thermal and violet (bakeable) lithographic plates.

The PBO can also be integrated into an existing plateline.

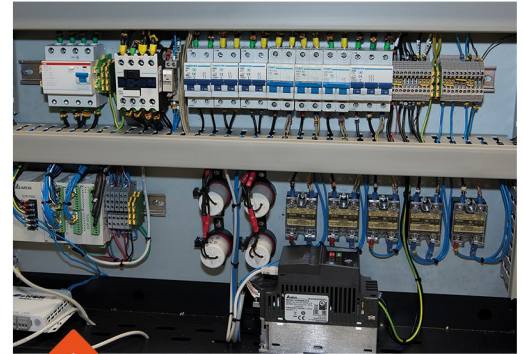




PBO : FEATURES



Self-contained internal wire conveyor belt with silicone rubber curtains on entry and exit to ensure minimal heat loss and to reduce power consumption.

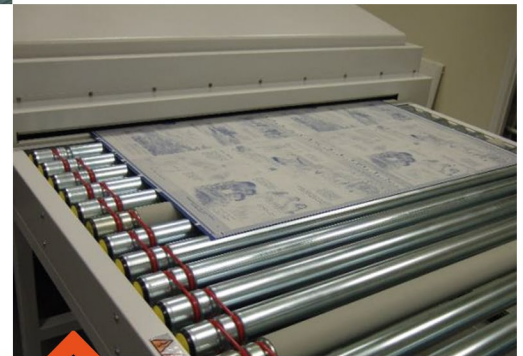


PLC control system with inverter conveyor/drive motor control.

Full colour LCD Touchscreen HMI Display provides access to all control functions and displays all plate baking parameters.



Exhaust fan extracts fumes and excess heat to provide an optimum working environment.



Optional infeed and exit (cooling) roller conveyors.

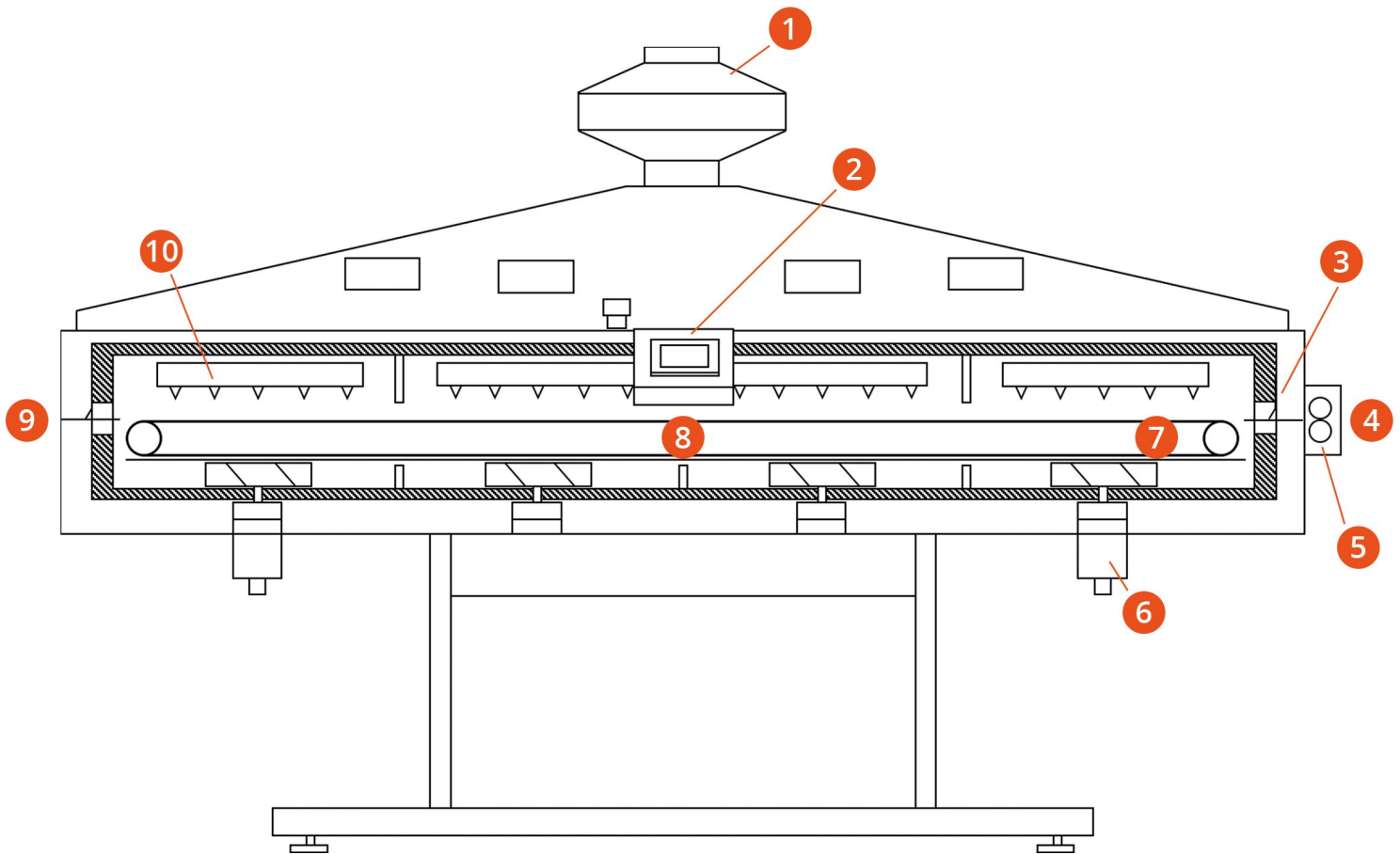


Individual control over the four baking zones and belt speeds.





TECHNICAL CHARACTERISTICS



- 1 Exhaust Fan
- 2 Control Pod-HMI & E-Stop
- 3 Silicone Curtains (Entry & Exit)
- 4 Entry
- 5 Driven Infeed Rollers
- 6 Circulation Blowers
- 7 Conveyor Belt
- 8 Baking Chamber(s)
- 9 Exit
- 10 Air Knives

TITANIUM PBO : SPECIFICATIONS

	1250 PBO	1650 PBO
MAXIMUM PLATE SIZE (W x L)	1250 x 325 mm (49.2 x 12.8")	1650 x 325 mm (65 x 12.8")
MAXIMUM PLATE THICKNESS	0.15 - 0.40mm (0.006 - 0.016")	0.15 - 0.40mm (0.006 - 0.016")
BAKING TIME	1.5 - 11 minutes (200 - 1350 mm/min)	1.5 - 11 minutes (200 - 1350 mm/min)
MAXIMUM BAKING TEMPERATURE	290°C (554°F)	290°C (554°F)
DIMENSIONS (L x W x H)	2520 x 1660* x 1600 mm <i>* +145mm for control pod</i> (99.2 x 65.4* x 63.0") <i>(* +5.7" for control pod)</i>	2520 x 2060* x 1600 mm <i>* +145mm for control pod</i> (99.2 x 81.1* x 63.0") <i>(* +5.7" for control pod)</i>
MACHINE NET WEIGHT	720 Kg (1584 lbs)	880 Kg (1936 lbs)
BAKING CHAMBER LENGTH	2200mm (86.6")	2200mm (86.6")
INPUT / EXIT HEIGHT	860mm (33.9")	860mm (33.9")
ELECTRICAL SUPPLY	3Ph+N+PE/GND (4W+GND), 400V AC, 50Hz <i>or</i> 3Ph+PE/GND (3W+GND) 200-230 V AC, 50/60Hz	3Ph+N+PE/GND (4W+GND), 400V AC, 50Hz <i>or</i> 3Ph+PE/GND (3W+GND) 200-230 V AC, 50/60Hz
POWER CONSUMPTION WARM-UP	17 kW (58,006 BTU/hr)	17 kW (58,006 BTU/hr)
POWER CONSUMPTION STANDBY	9 kW (30,709 BTU/hr)	9 kW (30,709 BTU/hr)
POWER CONSUMPTION IN-USE	11.25 kW (38,386 BTU/hr)	11.25 kW (38,386 BTU/hr)
AIRFLOW (FROM EXHAUST)	700m ³ / hr (24,720ft ³ / hr)	700m ³ / hr (24,720ft ³ / hr)
APPROVALS	Complies to CE and UL standards	Complies to CE and UL standards

HEIGHTS (UK) LIMITED has a policy of continual improvement for all its products and reserves the right to change specifications and functionality without notice.



HEIGHTS (UK) LIMITED
Wainstalls Mill, Wainstalls
Halifax, West Yorkshire
HX2 7TJ
United Kingdom

HEIGHTS USA INC.
1445 Lower Ferry Road, Ewing
Trenton, New Jersey, USA
Phone: +1 609 530 1300
info@heights-usa.com
www.heights-usa.com

Sales Desk:
+44 (0)1422 240914