



The TWP 680 & 1250 Toray Waterless Plate Processors lead the way in medium duty, high quality processing and are dedicated for Toray Waterless Printing Plates.

They have been designed specifically to provide the optimum plate clean-out for consistent, reliable, high quality results, plate after plate.

Features include:

- Fully compatible with Toray Waterless Printing Plates
- PLC control system and full colour LCD touch screen display
- Heavy duty construction
- Fully automated operation
- Ease of cleaning and maintenance
- Can be connected to a water recirculation unit

The TWP processors can be configured for on-line or off-line use using the comprehensive range of optional platesetter interfaces or infeed and exit tables.



TORAY

OFFSET WATERLESS

Twp 680/1250



Full Colour LCD Touch Screen HMI Display provides access to all control functions and displays all processing parameters

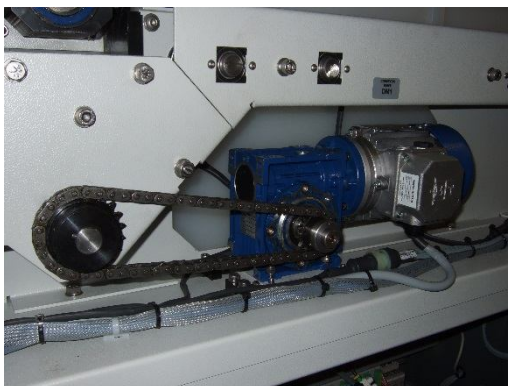
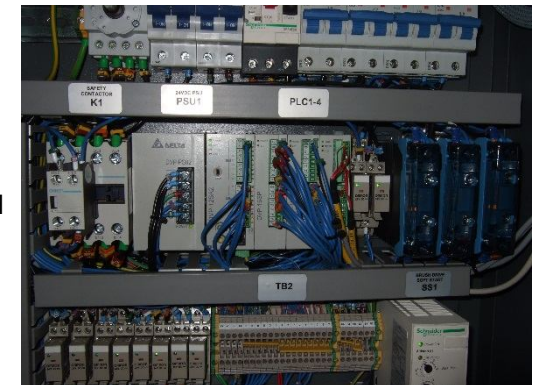


Large diameter rotating and oscillating brush rollers ensure optimum removal of softened silicone layer and application of after-treatment (dye) solution

Easy access to pumps and filters for increased serviceability



PLC control system with inverter conveyor/drive and oscillation motor control



TWP 680 - Heavy duty chain and belt drive system with AC drive and brush motors

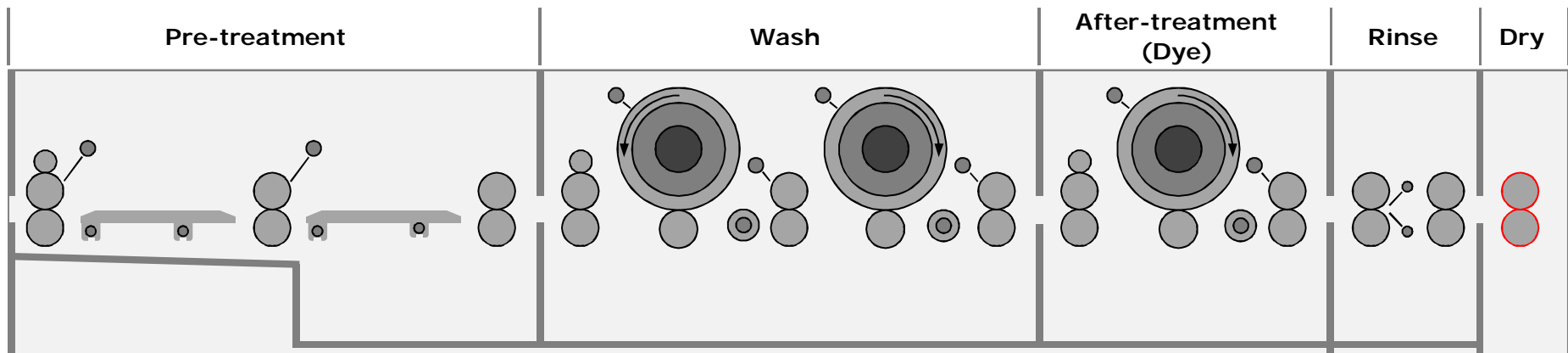


TWP 1250 - Heavy duty chain drive system with AC drive and brush motors. Idlers fitted with sealed ball race bearings for maintenance free operation

TECHNICAL CHARACTERISTICS

- 5 stage processing; Pre-treatment, Wash (Brush 1), Wash (Brush 2), After-treatment (Dye – Brush 3), Rinse, Dry (damper cover)
- PLC control system with intuitive touch screen display
- Adjustable temperatures on Pre-treatment, Wash & After-treatment (Dye) from 0 to 50°C
- Adjustable transport roller (dip time) speed from 400 to 1600mm/min. (on 680) & 400 to 2000mm/min. (on 1250)
- Adjustable brush oscillation speed – up-to 148RPM
- Fixed brush rotation speed ~540RPM
- Heavy duty chain (1250) and chain and belt (680) drive system with AC motors
- 10" filters on Pre-treatment, Wash & After-treatment (Dye)
- Pre-treatment, Wash & After-treatment (Dye) intermittently circulated in stand-by via filters and spray bars to ensure uniformity of temperature
- Mains water top-up (per plate) on wash section
- Brush covers & tank condensation covers to minimise evaporation & fluid loss
- 7-day start/stop timer function
- Plate jam detection
- Pre-treatment, Wash & After-treatment (Dye) Change Alarms & usage displays
- Roller assemblies easily removed using lifting hooks
- All tank components including spray bars, guides etc. easily removed for cleaning and servicing
- Pumps and motors easily accessible for servicing

TWP SECTIONAL VIEW



TWP 680 / 1250 SPECIFICATIONS

	680	1250
PLATE TYPES	Toray Waterless Printing Plates	
MAXIMUM PLATE WIDTH	660mm (26.0")	1250 (49.2")
MINIMUM PLATE LENGTH	320mm (12.6")	
PLATE THICKNESS	0.30mm (0.012")	
PROCESSING SPEED	400-1600mm/min. (15.75-63.00"/min.)	400-2000mm/min. (15.75-78.74"/min.)
PRE-TREATMENT TANK CAPACITY	25 litres (6.6 US gal.)	30 litres (7.9 US gal.)
WASH TANK CAPACITY	50 litres (13.2 US gal.)	85 litres (22.5 US gal.)
AFTER-TREATMENT (DYE) TANK CAPACITY	20 litres (5.3 US gal.)	30 litres (7.9 US gal.)
MACHINE DIMENSIONS (L x W x H) Excl. Control Pod	2135 x 1372 x 1165-1280mm (84.1 x 54.0 x 45.9-50.4")	COMPLETE - 2135 x 2056 x 1165-1280mm (84.1 x 80.9 x 45.9-50.4") PRE-TREATMENT - 735 x 2056 x 1165-1280mm (28.9 x 80.9 x 45.9-50.4") WASH & DYE - 1400 x 2056 x 1165-1280mm (55.1 x 80.9 x 45.9-50.4")
PLATE INPUT/EXIT HEIGHT	894-1009mm (35.2-39.7")	897-1012mm (35.3-39.8")
MACHINE NET WEIGHT	~750 kg (~1653 lbs)	~1000 kg (~2205 lbs)
ELECTRICAL SUPPLY	3Ph + N + PE/GND (4W + GND), 16A, 230/400V AC, 50/60Hz OR 3Ph + PE/GND (3W + GND), 22A, 200-230V AC, 50/60Hz	
WATER SUPPLY / CONNECTION	1.4-5 bar (20.3-72.5 psi) / 3/4" BSPM	
WASTE CONNECTION	1-1/4" BSPM	
NOISE LEVEL	72dB(A)	77dB(A)
ROOM TEMPERATURE / HUMIDITY	Optimum - 18-25°C (64.4-77°F) / Maximum - 29°C (84.2°F) / 25-65% non-condensing	
APPROVALS	Complies to CE standards	

HEIGHTS (UK) LTD. maintains a policy of continuous product improvement and reserves the right to change specification without notice

HEIGHTS (UK) LTD.
Wainstalls, Halifax, West Yorkshire
HX2 7TJ, United Kingdom
Tel.: +44 (0)1422 240914
Fax: +44 (0)1422 240589
Email: info@heights-uk.com
Web: www.heights.com

HEIGHTS USA INC.
1445 Lower Ferry Road, Ewing
Trenton, New Jersey, USA
Tel.: +1 609 530 1300
Fax: +1 609 530 9430
Email: info@heights-usa.com
Web: www.heights-usa.com

TWP 680
/ 1250

