

# INDIUM

The INDIUM 85 is a compact conventional and thermal litho plate processor designed for medium-to-high throughput printers.

*FEATURES INCLUDE:*

- ◀ Microprocessor control system with full colour LCD touchscreen display
- ◀ Small, compact footprint
- ◀ Fully configurable for most conventional and thermal plate types

Based on the hugely successful INCA platform, the INDIUM is robust in construction and is simple to operate.

INDIUM can be configured for on-line or off-line use using the extensive range of optional platesetter interfaces or infeed and exit tables.

Other options include: developer conductivity readout; second developer brush; water recirculation; drip tray.

INDIUM is suitable for use with most conventional, UV (CTcP) and thermal lithographic plates.

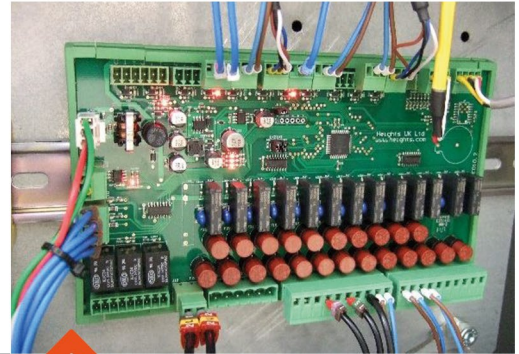




# INDIVUM : FEATURES

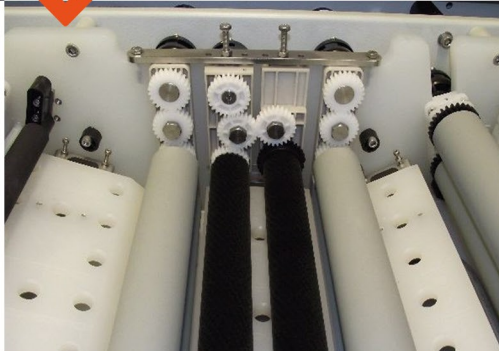


Fully adjustable developer plate guides. Ensures perfect plate alignment into and through the developer section reducing any potential for bow waves.



Full colour LCD Touchscreen HMI Display provides access to all control functions and displays all processing parameters.

Microprocessor control system with inverter conveyor/drive motor control.

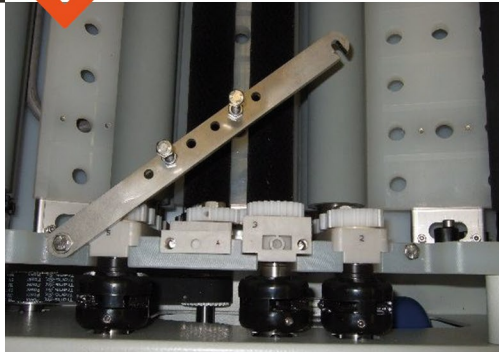


Brush in rinse section to ensure plates are thoroughly cleaned before gumming.

All rollers easily removed for cleaning and maintenance.



Heavy duty belt drive system with AC drive and brush motors for near maintenance free operation.





# TECHNICAL CHARACTERISTICS

## MAIN CHARACTERISTICS:

- Microprocessor control system with intuitive touchscreen display.
- Development by immersion and single rotating brush roller with facility for second (optional) brush.
- Adjustable developer temperature from 15 to 34°C.
- Developer constantly circulated via filter and two immersed spray bars to ensure uniformity of temperature and conductivity.
- Integrated developer cooling system - chiller and water cooled coil in tank.
- Developer cover to minimise oxidation.
- Developer bulk fill pump.
- Automatic m<sup>2</sup> and anti-ox (hourly and sleep) developer replenishment.
- Adjustable transport roller speed (dip time) from 700 to 2000 mm/minute (14-38 seconds).
- Rotating brush roller in rinse.
- Manual flow control valves on rinse and gum spray bars.
- Fully adjustable dryer output power from 0 to 100%.
- 7-day start/stop timer function.
- Programmable jog/auto run function.
- Developer, developer filter and gum change alarm and usage displays.
- Roller assemblies easily removed without tools.
- All tank components, including spray bars, guides etc., easily removed for cleaning and servicing.
- Pumps and motors easily accessible for servicing.
- Heavy duty chain drive system with AC motors.

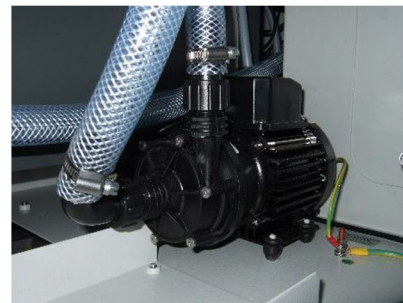
## CHILLER

The INDIUM is fitted with a chiller to ensure that the developer temperature is maintained at the optimum temperature.



## WATER SAVING SYSTEM - OPTION

The INDIUM can be fitted with an optional Internal Water Recirculation System (IWR) which reduces water usage and waste by up to 90%. The rinse tank holds a volume of water which is then re-circulated and filtered via upper and lower spray bars in the tank. The tank is replenished every m<sup>2</sup> of plate processed via a mains water supply and solenoid valve. Only a minimal amount of water is used/wasted per plate compared to the Direct-to-Drain method.



# INDIUM : SPECIFICATIONS

	<b>85</b>
MAXIMUM PLATE WIDTH	850mm (33.4 ")
MINIMUM PLATE LENGTH	240mm (9.4")
PLATE THICKNESS	0.15 - 0.40 mm (0.006 - 0.016")
PROCESSING SPEED	700 - 2000 mm/min (27.56 - 78.74"/min) 14 - 38 seconds dip-to-nip
DEVELOPER TANK CAPACITY	34 litres (8.98 US gal.)
RINSE TANK CAPACITY	25 litres (6.60 US gal.)
GUM/FINISHER TANK CAPACITY	2.5 litres (0.66 US gal.)
MACHINE DIMENSIONS (L x W x H) inc. Control Pod	1128 x 1293 x 1105-1185 mm (44.4 x 50.9 x 43.5-46.7")
PLATE INPUT HEIGHT	863 - 943 mm (34.0 - 37.1")
PLATE EXIT HEIGHT	858 - 938 mm (33.8 - 37.0")
MACHINE NET WEIGHT	305 Kg (671 lbs)
ELECTRICAL SUPPLY	1Ph+N+PE/GND (2W+GND), 16A, 200-230V AC, 50/60Hz
WATER SUPPLY CONNECTION	3-5 bar (43.5-72.5 psi) / 3/4" BSPM
WASTE CONNECTION	36mm O/D pipe for 32mm compression fitting
NOISE LEVEL	<60 dB
ROOM TEMPERATURE	18-29°C (64.4-84.2°F)
ROOM HUMIDITY	20-70% non-condensing
APPROVALS	Complies to CE standards

HEIGHTS (UK) LIMITED has a policy of continual improvement for all its products and reserves the right to change specifications and functionality without notice.



**HEIGHTS (UK) LIMITED**  
Wainstalls Mill, Wainstalls  
Halifax, West Yorkshire  
HX2 7TJ  
United Kingdom

**HEIGHTS USA INC.**  
1445 Lower Ferry Road, Ewing  
Trenton, New Jersey, USA  
Phone: +1 609 530 1300  
info@heights-usa.com  
www.heights-usa.com

*Sales Desk:*  
**+44 (0)1422 240914**